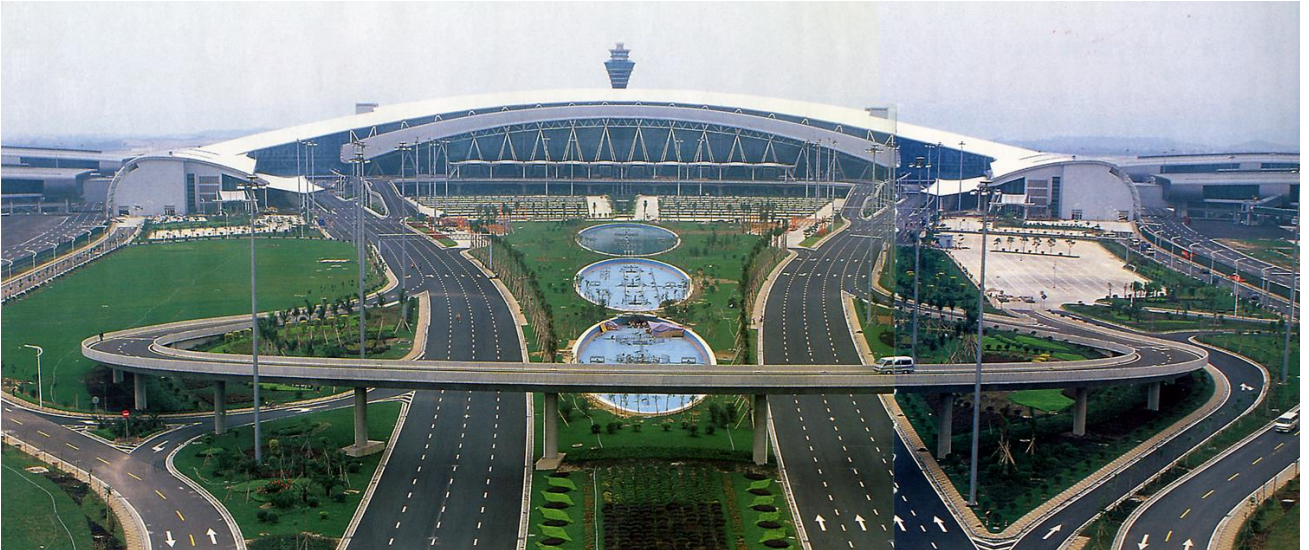


## GUANGZHOU BAIYUN INTERNATIONAL AIRPORT – CHINA



**Guangzhou Baiyun International Airport** is the main airport of Guangzhou, the capital of Guangdong province, China.



In 2011, Guangzhou Baiyun International Airport was China's 2nd busiest and world's 19th busiest airport in terms of passenger traffic, with 45,040,340 people handled. As for cargo traffic, the airport was the 3rd busiest in China and the 21st busiest worldwide. Guangzhou airport is also the 2<sup>nd</sup> busiest airport in terms of traffic movements in China.

Guangzhou city counted 13,300,000 inhabitants in 2020.



In October 2003, **ZINGA** was used on roll-formed panels in the first phase of construction.

### System (2003):

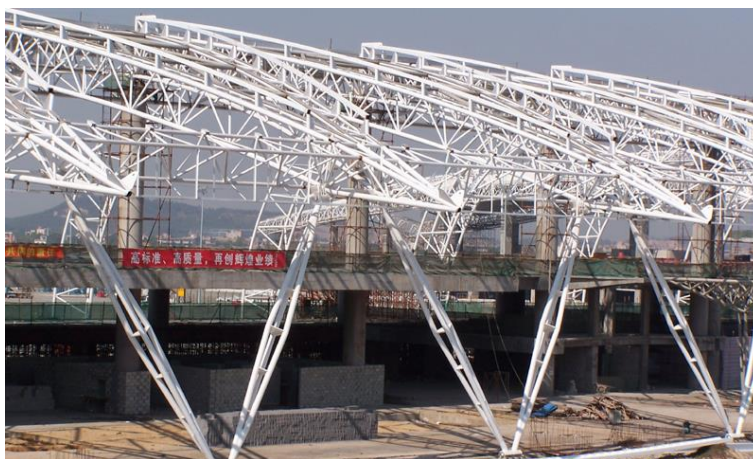
ZINGA	1 x 60 µm DFT
Epoxy MIO	1 x 80 µm DFT
PU	1 x 50 µm DFT



In August 2008, the airport's new expansion plan was approved by the **National Development and Reform Commission of China**.

A third runway located 400 meters east of the existing east runway has been built and is now in use.

In December 2008, Terminal 1 was expanded and again **ZINGA** was used.



### System (2008):

ZINGA	1 x 100 µm DFT
Epoxy Sealer	1 x 30 µm DFT
Epoxy MIO	1 x 100 µm DFT
Polysiloxane	1 x 60 µm DFT